

THREAD & INK

DESIGN STUDIO



Inspired by the riverbank's quiet rhythm - dancing dragonflies
and swans glide serenely on sunlit waters, unhurried and peaceful.
A collection to soothe the soul.



THREAD & INK
DESIGN STUDIO

Material: 100% Cotton | Width 44/45" - 112/114cm | Weight: 155gsm

**OEKO
TEX®**



RIVB1221

Downstream



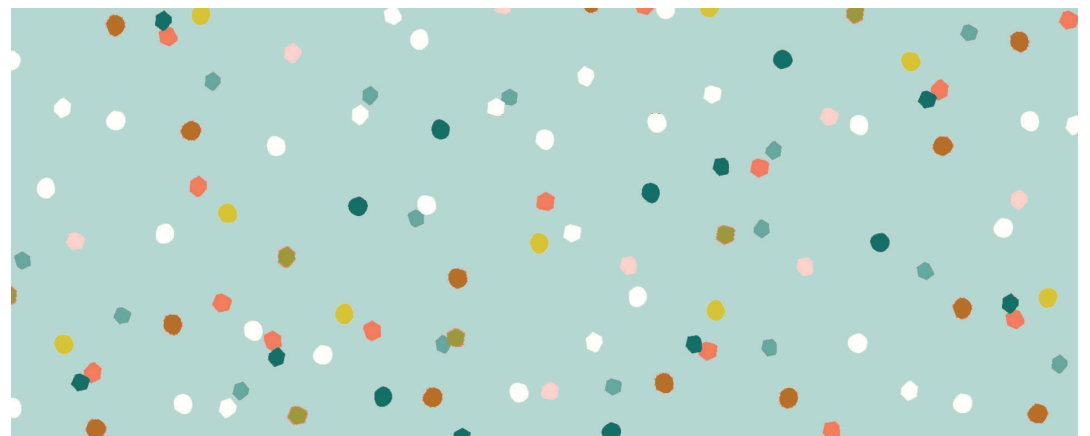
RIVB1222

Dragonflies



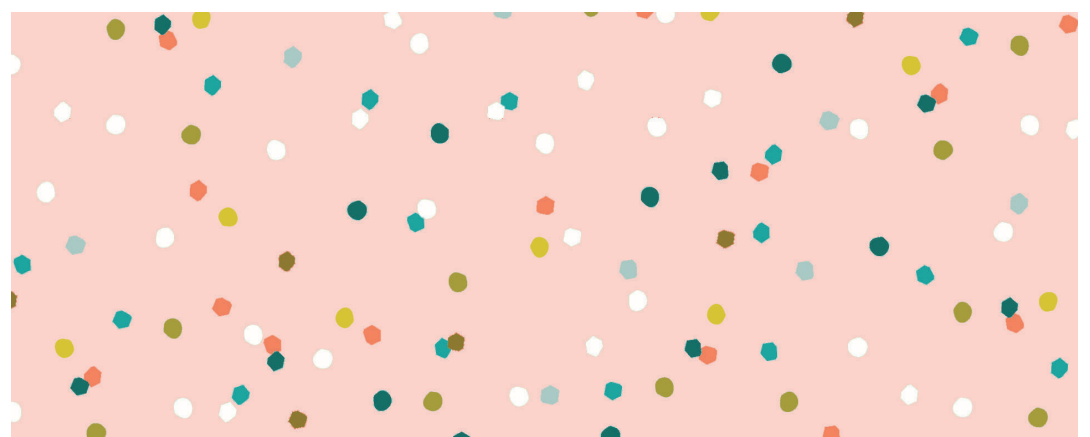
RIVB1223

Flowing Reeds



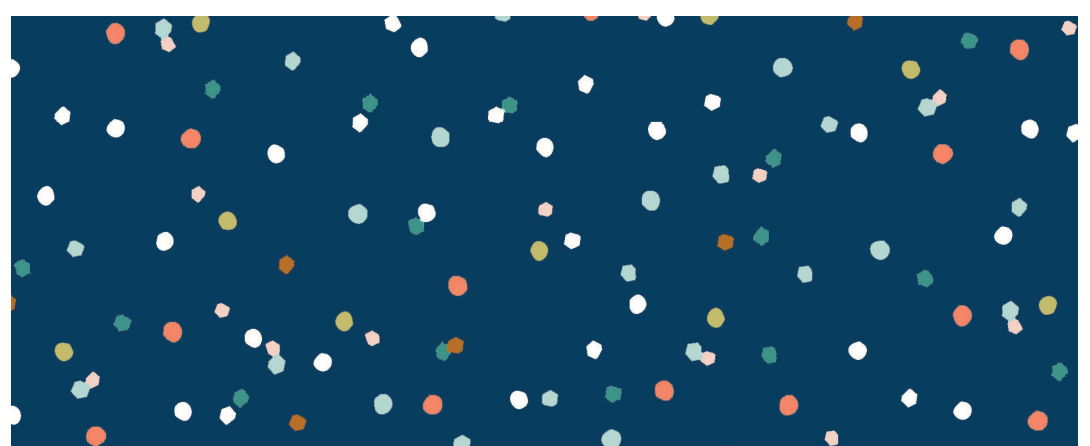
CONF5000

Confetti - Aqua



CONF5000

Confetti - Rose



CONF5000

Confetti - Marine



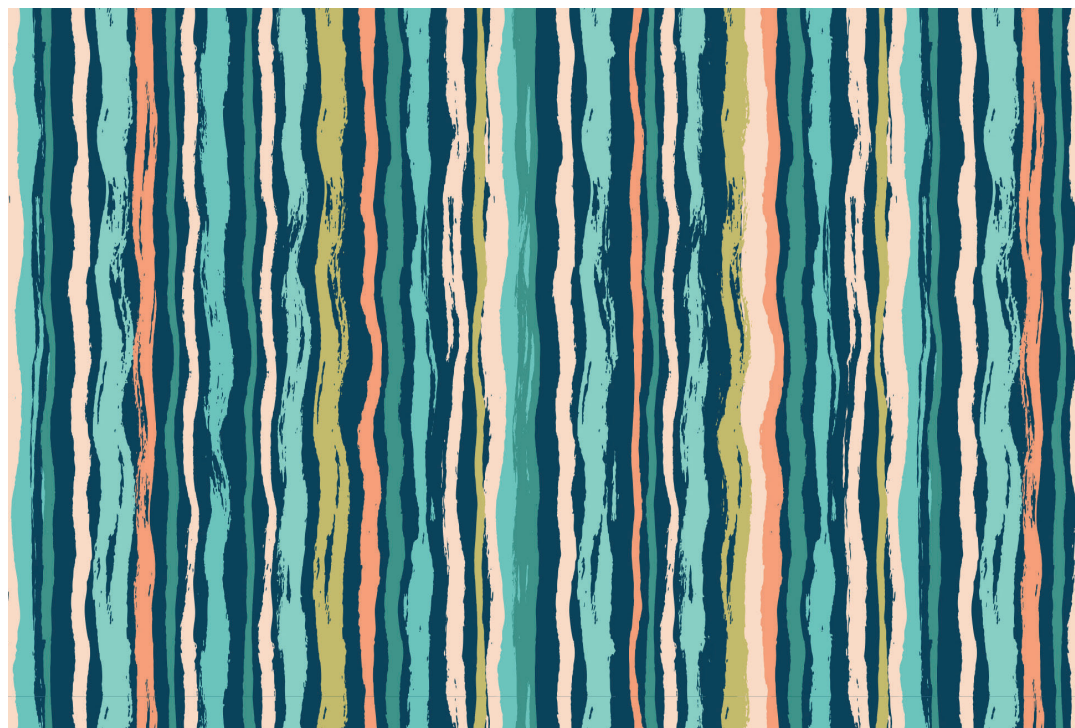
RIVB1224

Take Flight



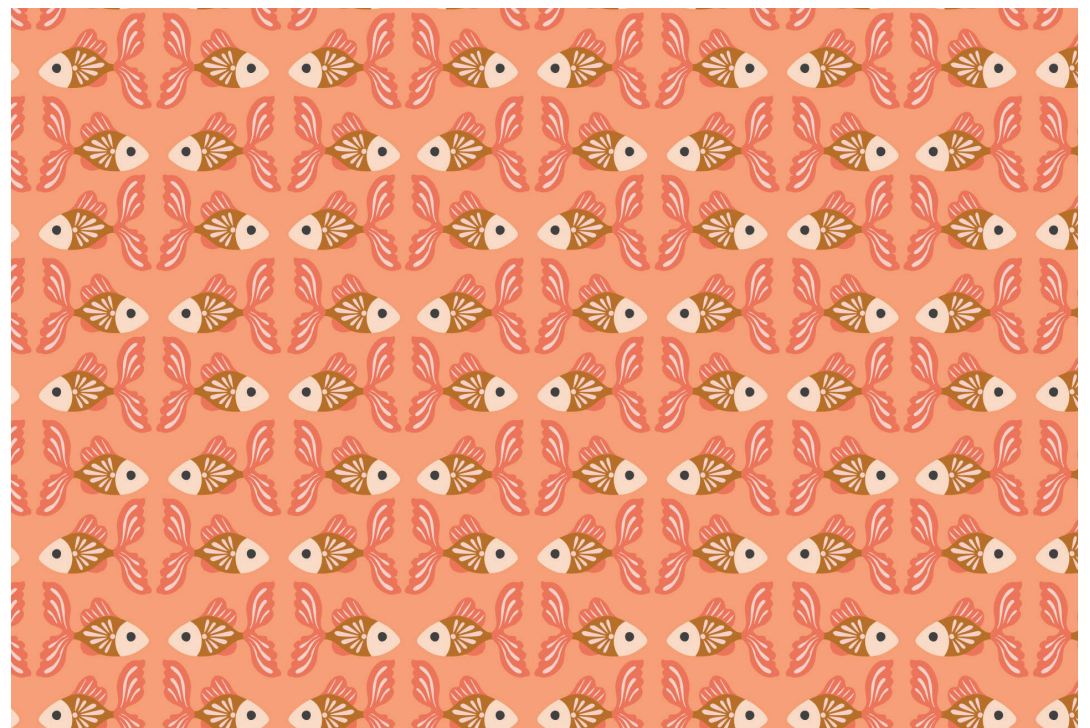
RIVB1225

Swan Serenade



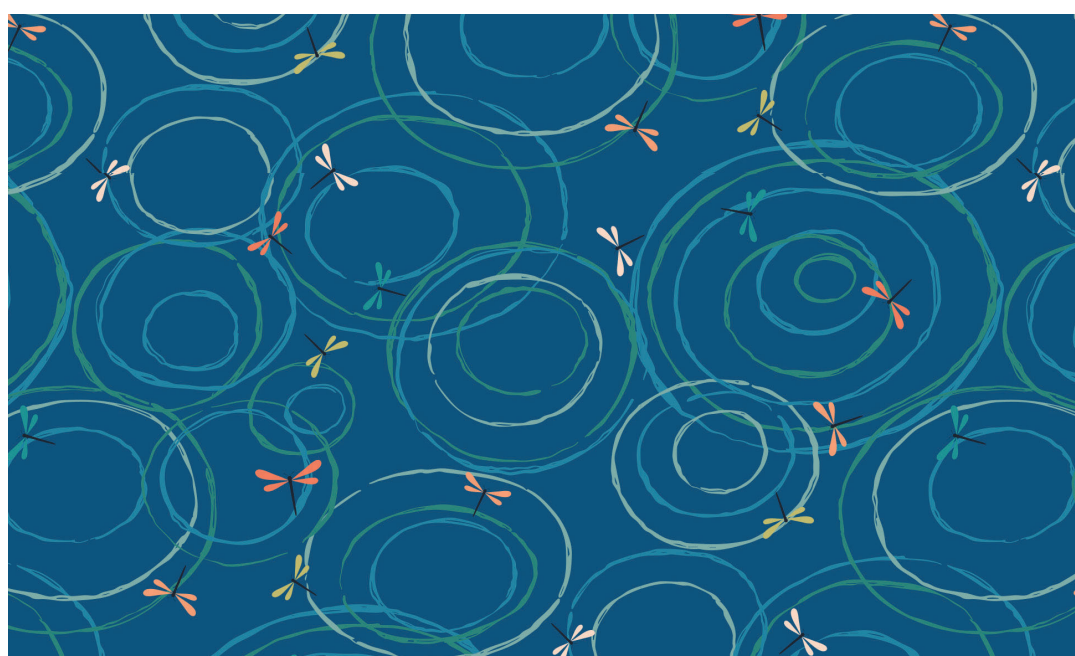
RIVB1226

Waterfall



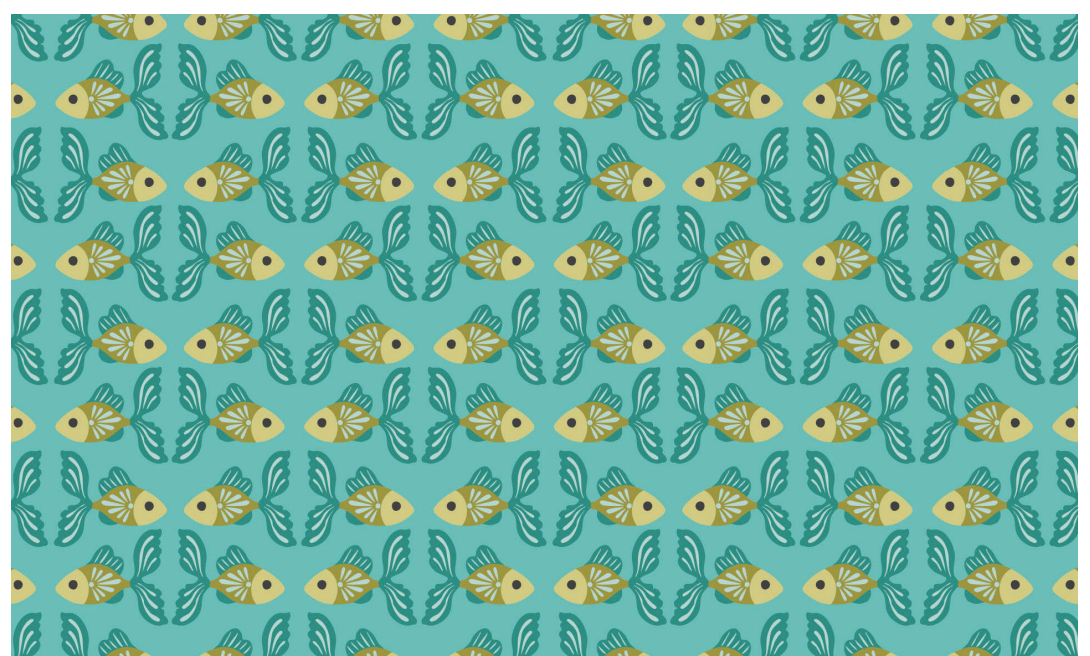
RIVB1227

Tiny Fins - Coral



RIVB1228

Ripples



RIVB1229

Tiny Fins - Turquoise

The Penny Quilt

Pattern by Kitchen Table Quilting

www.kitchentablequilting.com



Bethan Janine

Bethan is an illustrator and textile designer hailing from Sheffield in the UK, engaging in a diverse range of projects including textiles, home decor, greetings, stationary, editorial, fashion and packaging.



threadandinkdesign.com